

SEPTEMBER 2023

Grande Prairie Composite High School Newsletter

THE COMP



THE COMP

Message from the Principal

Dear Parents/Guardians,

As we approach the Thanksgiving holiday, we will have beautiful fall weather to enjoy, and we are grateful for your continued support in your child's education at the Grande Prairie Composite High School.

Thanksgiving is a time for reflection, appreciation, and togetherness, and we are thankful for the privilege of working with your children each day. Our Phoenix mission is to educate, inspire, and empower, and we are proud of your students' hard work and dedication throughout this school year. Their commitment to learning and personal growth is a testament to the values and guidance they receive at home. We encourage you to take this holiday to spend quality time with your family, share stories, and create lasting memories.

Please note that the Composite High School will be closed for Thanksgiving on October 9th, and classes will resume on October 10th. We hope you enjoy this break and return refreshed and ready to continue the journey of education together. Once again, thank you for entrusting us with your child's education.

We wish you and your family a warm and joyous Thanksgiving filled with love, laughter, and gratitude.




Dennis Vobeyda

Principal



October 2023

Sunday	Monday	Tuesday	Wednesday	Thursday	Friday	Saturday
1	2 School Council 6pm-7:30pm	3	4	5	6	7
8	9 Happy Thanksgiving School Closed	10	11	12	13	14
15	16	17	18	19	20  Senior Phoenix Invitational	21
22	23	24	25	26	27 PLD No School	28
29	30	31				

Upcoming Important Dates

Monday November 6th

- School Council Meeting 6pm

Friday November 10th

- PLD NO SCHOOL for students

Monday November 13th

- Parent Teacher Interviews 4-7PM

Tuesday November 14th

- Parent Teacher Interviews 4-7PM

Friday December 1st

- School Closed

Monday December 4th

- School Council Meeting 6pm

Friday December 15th

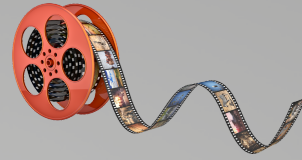
- PLD NO SCHOOL for students

Friday Dec 22nd - Friday Jan 5th

- Christmas Break



Current Clubs



Mon

E-sports
2018

Student Council
1083

Tue

Animation & Film
2063

Interact
1082

Speed run
2034

Wed

E-sports
2018

Yarn Club
1082

Kiva
2027

School News
2063

Thu

E-sports
2018

Chess
2027

Speed run
2034

First Responders
2064

Fri

E-sports
2018

Chess
2027



All clubs have been approved by Mr. Vobeyda and are supervised by the teacher within the stated classrooms. All begin at 11:35. These clubs are student lead and we are very proud of their initiative!

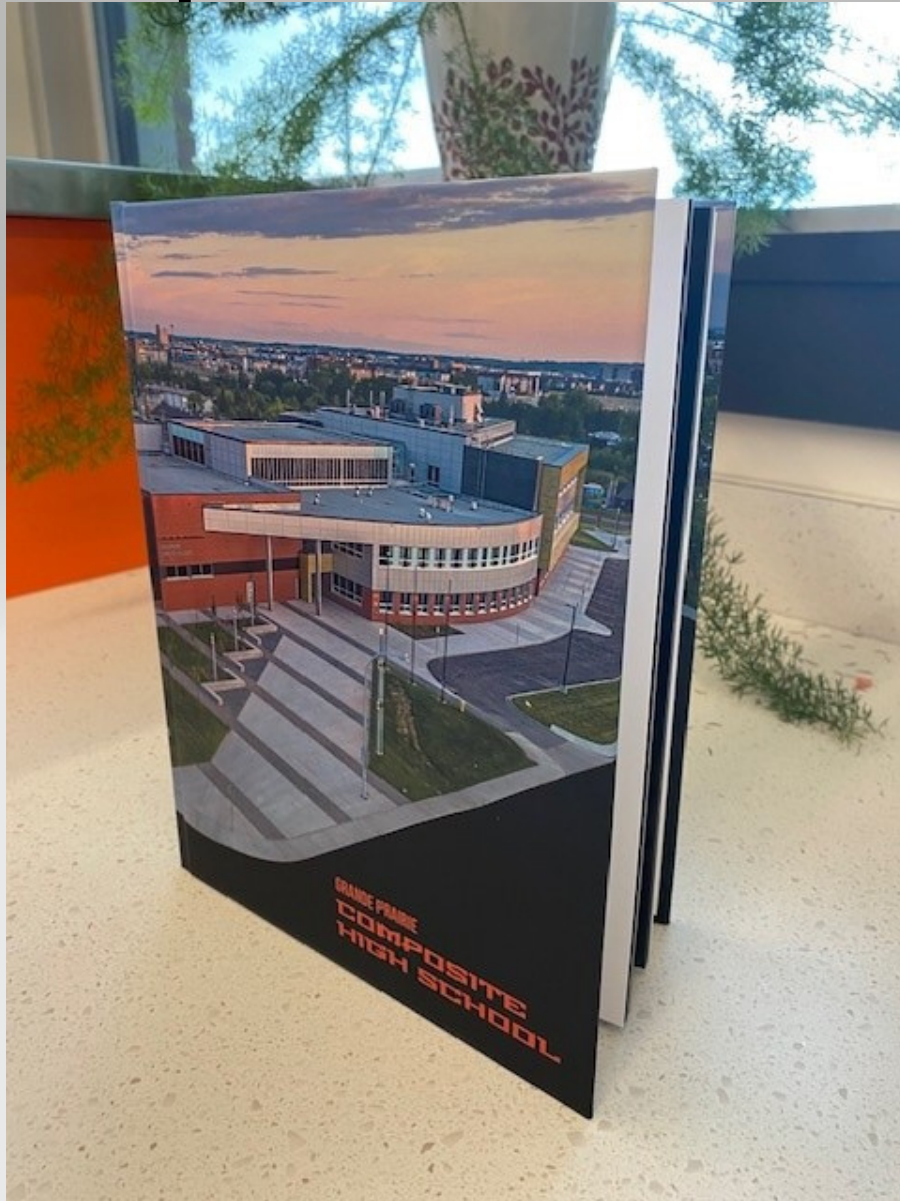


THE COMP

SEPTEMBER 2023

ARRIVED

2022 - 2023 Yearbooks can be picked up at The Office



If you paid for a yearbook in previous years, but never picked it up, please come to The Office between 8 and 4 to pick it up!

Viewing Report Cards, Current Grades and Teacher Comments

1. Go to <http://powerschool.gppsd.ab.ca/public/>
2. Enter your username and password.
 - If you have forgotten or do not know your sign in information please call the school at 780-532-7721.

To view Report Cards

If you have multiple children you can switch between them by clicking the students name

If you are having any issues viewing the report cards please pay special attention to the items beside the red stars.

The suggested browser for this report is Chrome. Other browsers can be used but will not be supported.

Click the report card name to view. Can't see the report card? Try unblocking popups in your browser.

Name	Student	Year
Grade 11 - 21 - 2021-2022	Grade 11/12 Composite High School	11000000
Grade 10 - 21 - 2021-2022	Grade 11/12 Composite High School	11040000
Grade 9 - 21 - 2021-2022	Grade 11/12 Composite High School	11050000
Grade 8 - 21 - 2021-2022	Grade 11/12 Composite High School	11070000
Grade 7 - 21 - 2021-2022	Grade 11/12 Composite High School	11080000
Grade 6 - 21 - 2021-2022	Grade 11/12 Composite High School	11090000
Grade 5 - 21 - 2021-2022	Grade 11/12 Composite High School	11100000
Grade 4 - 21 - 2021-2022	Grade 11/12 Composite High School	11110000

Click to view Report Cards, then click on the report card you'd like to view.

For reports, right click and choose the printer from the destination drop down.

To generate a PDF file, right click and in the destination drop down choose "Save as PDF".

To view Current Grades and Teacher Comments

Grades and Attendance: Click to view current grades

Click to see details of current grade

EQS	Last Week							This Week							Absences	Tardies
	M	T	W	T	F	S	S	M	T	W	T	F	S	S		
01								10	8						11	8
02													10	11	1	0
03															11	11
04													10	11	9	9
05								10	11						11	11
06													10	11	1	2
07								11	11						11	11
08													10	11	2	0

Teacher Comments: In "Teacher Comments", choose the reporting term you would like to view

Click to view Teacher Comments

EQS	Course #	Course	Teacher	Comment
01(21-24)				
02(21-24)				
03(21-24)				
04(21-24)				
05(21-24)				
06(21-24)				
07(21-24)				
08(21-24)				

THE COMP

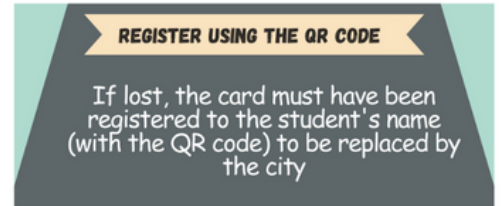
Register Your Child's City of Grande Prairie Transit **Youth** **SUPERPASS**



We are sending your child home with their free transit SUPERPASS. Please watch for it and register it at cityofgp.com/youthtransit



REGISTER NOW! In case you lose your SUPERPASS!!!



Find the QR Code in the office or on our Facebook Page

The Comp has no control over nor are we able to offer any assistance with these passes.

The SuperPass is provided to student by the City of GP and any questions, problems, or concerns need to be directed to them.

Please click here

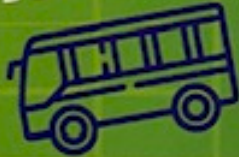
THE COMP



RIDE FOR FREE UNTIL YOU TURN 18

ENJOY YOUR FREE TRANSIT PASS

FIND THE STOP/ROUTE NEAREST YOUR SCHOOL:



YOUTH AGES 17 AND UNDER RIDE FOR FREE

Riders must present valid Youth SUPERPASS card when boarding

cityofgp.com/youthtransit

YOUTH SUPERPASS cards are distributed to students through the Public and Catholic schools as a part of a new initiative to increase transit ridership. Youth who are not enrolled with the Public or Catholic Schools may obtain their free Youth SUPERPASS card from City Hall with valid ID, confirming age. This includes private and homeschooled students as well as those under 18 and not attending school. There will be no fees for your first Youth SUPERPASS card. Your card will expire at the end of the year you turn 18.

For more information on transit in Grande Prairie visit cityofgp.com/transit

WHERE'S MY RIDE

Find out when your next three buses are scheduled to arrive visit gpt.mytransitride.com and enter your route and stop number.

ON-DEMAND TRANSIT

On-Demand Transit keeps you connected around the city with bookable shuttle service between on-demand stops and selected transit hubs.

QUESTIONS?

Contact Access GP at 311 or info@cityofgp.com

LOST YOUR CARD?

To get a replacement Youth SUPERPASS card, visit City Hall at 10205 98 St. Bring valid ID to confirm your age. A \$5 fee applies for replacement cards.



THE COMP

Congrats!

DAISY NELLIS



We are proud to share that **Daisy Nellis**, a student at the Grande Prairie Composite High School, has been selected as **one of only 40 youth province-wide** to be part of the 2023-2024 Minister's Youth Council, helping to shape Alberta's education future.

"I am super excited for this new opportunity and look forward to sharing ideas and learning at the provincial level," shares Daisy. She has showcased her leadership by actively participating in the City of Grande Prairie's Youth Council, School Council and the Division's Student Advisory Committee.

Grande Prairie Composite High School's Principal, Dennis Vobeyda, couldn't be prouder, noting Nellis' commitment to their school emblem's Phoenix spirit. "Daisy approaches her education with foresight, eagerly embracing challenges with a forward-thinking mindset."

Sandy McDonald, GPPSD Superintendent, added that Nellis has a strong voice for her fellow students and has done an exemplary job of providing leadership by example on the Division's Student Advisory Committee. "We are grateful to Education Minister Demetrios Nicolaides, and Alberta Education for giving students a chance to share their voices - fostering the leaders of tomorrow."

Collectively, the council members will bring diverse life experiences, knowledge, and skills from across the province.

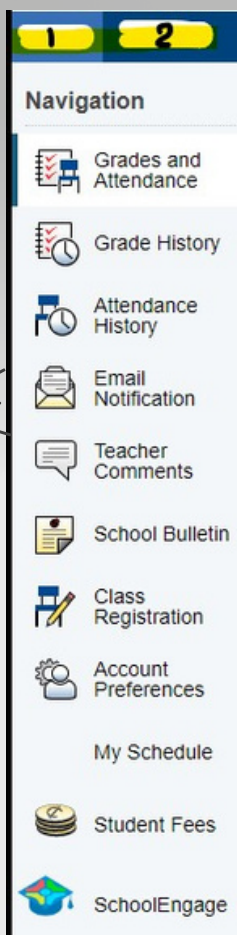
THE COMP

2023-2024 Change of Information Form

If you need to change an address*, phone number, email address, emergency contact, update a medical condition, etc. please fill out a change of information form. Staff cannot change any information on your behalf.

*if you're changing an address, you will need to provide proof of address

Once you login you'll see something like this. If you have more than 1 child in our division, you'll see their names at the top where the 1 and 2 are, click on each name to go in and see their information.



1

Go to PowerSchool by clicking this link:

<https://powerschool.gppsd.ab.ca/public/home.html>

Enter the username and password you previously created.

If you have forgotten your login information, please call the school at 780-532-7721 to reset it for you, **DO NOT CREATE A NEW ACCOUNT.**

2

Once Logged In

1. Click on the SchoolEngage icon at the bottom left hand menu. A new screen will load.
2. Click Students in the left menu
3. Students
 Student Name Click on your child's name. Repeat the next steps for all registered children.

3

CHANGE OF INFORMATION FORM

6. After clicking your child's name, you will see a list of forms on the right side of the screen. Please select the **2021-2022 Registration Update Form**. Click the green +New button (circled in red) and follow the steps to complete your registration update.



7. Click **SUBMIT** when done.

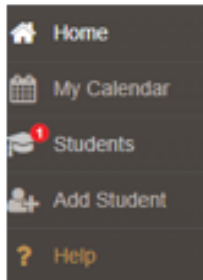
If you have any other questions, please call the school at 780-532-7721

THE COMP

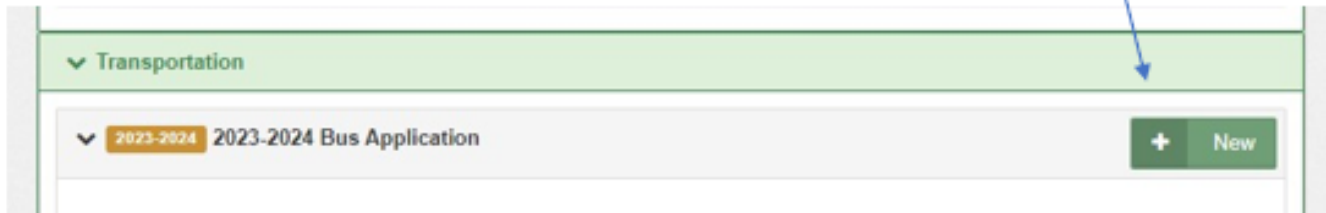
APPLYING FOR A BUS PASS FOR YOUR STUDENT

#1. Once in School Engage, click on "Student" and all students listed in your account will populate, select the student you are wanting a bus pass for.

Here's what you'll see:



#2. Once your options on the right side populate, find TRANSPORTATION and select "Bus Application"



#3. Complete all information on the form. When you come to the 9th tab make sure you click on the edulog to ensure that they are eligible for free bussing. It looks like this:

Please check your child's busing eligibility here:

<https://edulog.gppsd.ab.ca/livewq/webquery/>

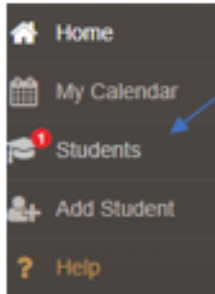
Once you submit, it can take up to 5 days for it to arrive at the school, until that time you are responsible for transportation for your student to/from school.

PLEASE NOTE: WE DO NOT HAVE TEMPORARY PASSES, IF YOUR STUDENT LOSES THEIR PASS THEY WILL NOT BE ALLOWED TO RIDE THE BUS AND MUST ARRANGE OTHER TRANSPORTATION.

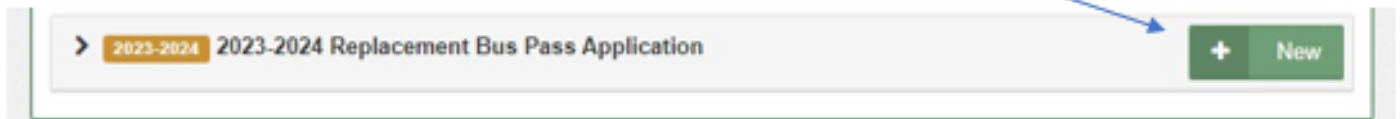
APPLYING FOR A REPLACEMENT BUS PASS FOR YOUR STUDENT

#1. Once in School Engage, click on "Student" and all students listed in your account will populate, select the student you are wanting a replacement bus pass for.

Here's what you'll see:



#2. Once your options on the right side populate, find TRANSPORTATION and select Replacement Bus Pass Application, click directly on NEW



#3. Complete information requested on the form. If there have been NO changes to the address you will not need to check for eligibility.

Once you submit, it can take up to 5 days for it to arrive at the school, until that time you are responsible for driving your student to/from school. They are not permitted on the bus unless they physically have their card in hand to scan up entering the bus.

PLEASE NOTE: WE DO NOT HAVE TEMPORARY PASSES, IF YOUR STUDENT LOSES THEIR PASS THEY WILL NOT BE ALLOWED TO RIDE THE BUS AND MUST ARRANGE OTHER TRANSPORTATION

Go to <https://www.gppsd.ab.ca>



Bus route and Stops/Times

Welcome to edulog's WebQuery

WebQuery helps you determine the schools a student is eligible to attend and the available bus stops. WebQuery also provides a helpful street map. Just enter the student's information and click "Go."

WebQuery helps you match your typed in address with an address in the database by allowing you to enter a partial street name. For example, you could enter "2555 Lex" to match "2555 Lexington Ave N"

Student Information:

Address Grade Program

When [this pops up](#), if COMPOSITE HIGH SCHOOL appears click on it

Select a School:

School Name	Sch Distance Walk	Sch Distance Drive	Eligibility Description	Grades
CRYSTAL PARK SCHOOL	1.57 km	1.57 km	Parent responsibility zone	01 02 03 EC PS
CRYSTAL PARK SCHOOL	1.57 km	1.57 km	Parent responsibility zone	04 05 06
CRYSTAL PARK SCHOOL	1.57 km	1.57 km	Parent responsibility zone	07 08
<u>COMPOSITE HIGH SCHOOL</u>	3.72 km	3.73 km	Eligible	09 10 11 12

The image below will appear showing your bus pick up (am) drop off times (pm) and the locations of those. If you want a [visual](#) where the stop is, click on VIEW ON MAP below.

Select a School:

School Name	Sch Distance Walk	Sch Distance Drive	Eligibility Description	Grades
CRYSTAL PARK SCHOOL	1.57 km	1.57 km	Parent responsibility zone	01 02 03 EC PS
CRYSTAL PARK SCHOOL	1.57 km	1.57 km	Parent responsibility zone	04 05 06
CRYSTAL PARK SCHOOL	1.57 km	1.57 km	Parent responsibility zone	07 08
<u>COMPOSITE HIGH SCHOOL</u>	3.72 km	3.73 km	Eligible	09 10 11 12

Stop List : COMPOSITE HIGH SCHOOL

Number	Stop Time	Stop Description	Distance To Stop	Bus Number	Route Number	School Bell Time	Frequency
1	07:33 AM	97B ST @ PARK	0.42 km	C03	C03	08:30 AM	MTWUF--
2	04:07 PM	97B ST @ PARK	0.42 km	C44	C44	03:30 PM	MTWUF--

HOW TO SEE YOUR BUS STOP/TIMES

Once this open you will see a red dot, that represents your bus stop. You can zoom in or out. You should also see a figure of a person, that figure represents your address.

Stop List : COMPOSITE HIGH SCHOOL

Number	Stop Time	Stop Description	Distance To Stop	Bus Number	Route Number	School Bell Time	Frequency
1	07:33 AM	97B ST @ PARK	0.42 km	C03	C03	08:30 AM	MTWUF--
2	04:07 PM	97B ST @ PARK	0.42 km	C44	C44	03:30 PM	MTWUF--

COMPOSITE HIGH SCHOOL
Address: [Redacted]

Clicking on the map will:
 Zoom in
 Zoom out
 Re-center

Clear boundary

© Education Logistics, Inc.

When you zoom in it will look something like this

Stop List : COMPOSITE HIGH SCHOOL

Number	Stop Time	Stop Description	Distance To Stop	Bus Number	Route Number	School Bell Time	Frequency
1	07:33 AM	97B ST @ PARK	0.42 km	C03	C03	08:30 AM	MTWUF--
2	04:07 PM	97B ST @ PARK	0.42 km	C44	C44	03:30 PM	MTWUF--

COMPOSITE HIGH SCHOOL
Address: [Redacted]

Clicking on the map will:
 Zoom in
 Zoom out
 Re-center

Clear boundary

USEFUL LINKS

Grande Prairie Public School District

(register, busing, boundaries, tutorials)

Composite High School Website

(supply lists, bells times, newsletters, etc,)

GPCHS Facebook Page

GPCHS Instagram Page

Ordering school pictures

THE COMP